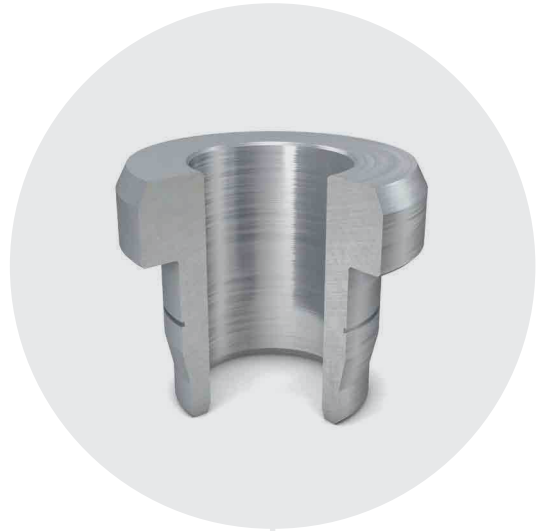


CASE HISTORY Automotive Components

On Mikron Multistar LX-24

Downsize your production costs!



COST/PART
-49%

QUADRUPLICATE YOUR PRODUCTIVITY

The Multistar LX-24 with 24 work stations and up to 44 working spindles ensures a smooth mass production. With the Multistar LX-24, parts can be machined from below and above or from the side. Other additional features are the 24 intermediate stations, which allow measurement, monitoring and cleaning procedures during the same run.

Mikron Switzerland AG, Agno - Division Machining
Headquarter, Via Ginnasio 17, CH-6982 Agno, Switzerland
Phone +41 91 610 61 11, mag@mikron.com

www.youtube.com/mikrongroup
www.mikron.com

MIKRON

CASE HISTORY Automotive Components

On Mikron Multistar LX-24

The challenge

- Double the annual production from 14 to 26 million parts/year while reducing the cost/part by 30%
- No increase of floor space possible. With the actual production method (single spindle cam driven lathes) 77m² are occupied
- Production in 3 shifts
- Raw material: SUS303 (X8CrNi319-9) from wire Ø 4 mm
- Tolerances: on Ø ± 6 µm Cmk1.67, radial run-out 6µm Cmk1.67



The traditional solution

Production area needed: **153.6 m²**



Required machines: **19 (automatic lathes)**



Employees: **12**



Machining time: **12 seconds/part**



Cost/part: **100%**



Energy consumption: **22.8 kW**



Mikron: The innovative solution

Production area: **27.8 m²**



Required machines: **1 Multistar LX-24 + TR-42**



Employees: **1.5**



Machining time: **0.6 seconds/part**



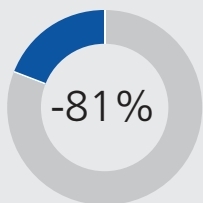
Cost/part: **-49.2%**



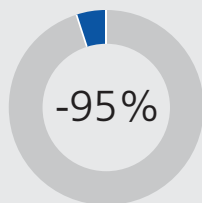
Energy consumption: **20 kW**



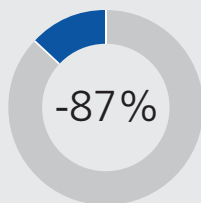
Your advantage



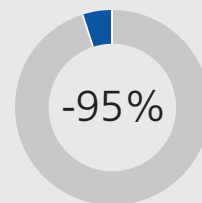
Production area



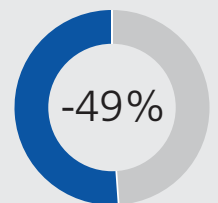
Machines



Employees



Machining time



Cost/part